



The Solutions

The Problems

Colorado climate exposed the building to weather extremes and potential delays.

WrapShield SA Self-Adhered kept construction schedules moving, as it was installed in below freezing temperatures. Both WrapShield SA and RevealShield SA can remain exposed for up to 180 days prior to installation of cladding system.

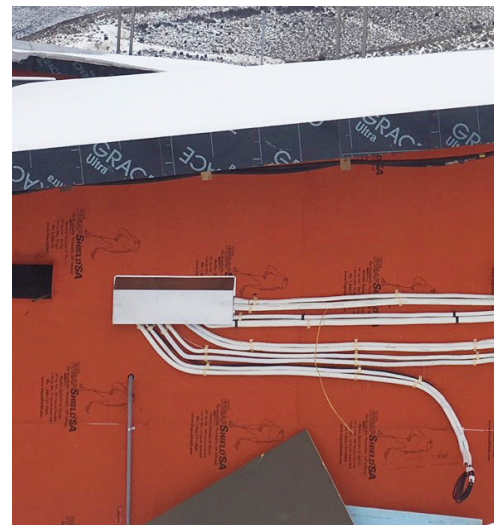
Plywood substrate was exposed to moisture due to snowfall throughout the construction process.

VaproShield membranes protect against water intrusion and allow building materials that may have become wet during the construction phase to rapidly dry out, reducing the risk of plywood rot, deterioration, or distortion.

The structure's unique open-joint design and substantial number of windows posed a challenge to flashing efforts

Only two components were needed to flash the building's many windows, drastically reducing labor and material costs—and saving valuable construction time in the process.

UV-Stable RevealShield SA Self Adhered is specifically designed for open joint rain screen wall cladding systems, where permanent UV exposure is inherent. Furthermore, its sleek black design creates the desired black reveal between the open joints of the façade.





The Specifications

VaproShield Solution	RevealShield SA Self-Adhered WrapShield SA Self-Adhered
Size	10,500 square feet
Construction Type	New, Residential
Architect	Kyle Webb Vail, CO khwebb.com
Installer	Patriacca Construction Vail, CO pcivail.com
General Contractor	RA Nelson Avon, CO ranelson.com
VaproShield Representative	Elliott Associates, Inc. Golden, CO www.easales.com